

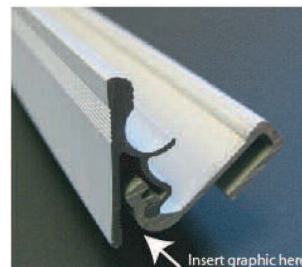
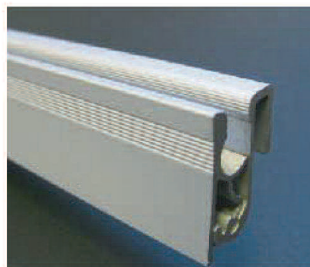
Axis Banner Stand Retractable

This is our widest display at 47" Wide



Axis Banner Stand
Single Sided

Banner Size: 47" x 79"
Weight: 15lbs.



Top Rail

Clamp style for very easy change of graphics



Very easy to use & setup
Streamlined Design

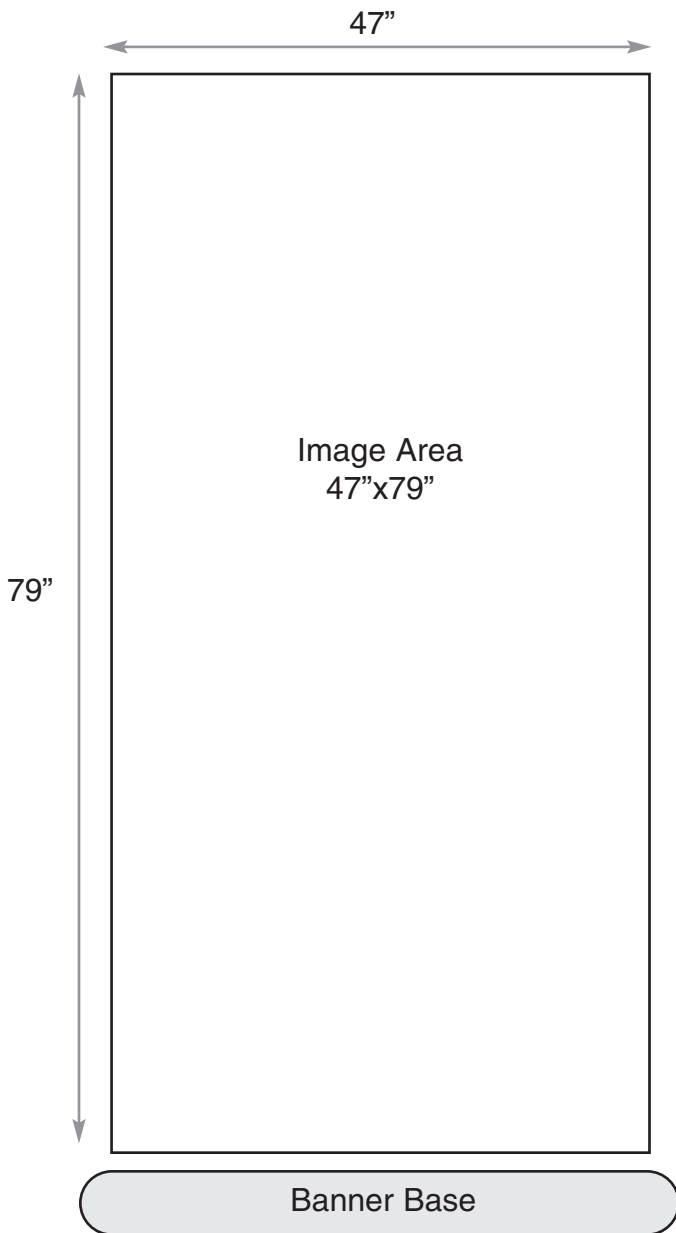


Stylish support feet
for extra support




Carrying Case


Axis Banner Stand Graphic Specifications





- **Banner Size 47" x 79" (live area)**
- **Add 1/4" bleed on the top & sides**
- **Add 6" bleed to the bottom if there is a background image**
- **150dpi**
- **CMYK not RGB**
- **Outline or curve any text**
- **Save as: PDF, tiff, eps or jpeg**


Setup:

- 

1 Open the padded nylon bag, take out the base and the telescopic pole
- 

2 Rotate both legs until they are at a 90 degree angle to the system
- 

3 Extend the bottom half of the telescopic pole and close the snap lock
- 

4 Insert the pole into the base and pull the graphic panel halfway up. Insert the lip on the cap into the bottom channel of the top extrusion
- 

5 Extend the top portion of the pole to your desired height and close the snap lock.

- Keep critical graphics like text & logos away from the trim edge.
- Panel printed on a 6 colour UV printer.
- FTP site available to upload your image - Contact us for details.